



VALVE FOR LPG CYLINDER TYPE RBG - 1



DESCRIPTION

The valve type *RBG-1* is a fitting used to equip the LPG cylinder, realizing closing / opening the flow circuit of the gas by lifting / downing the valve on the seat.

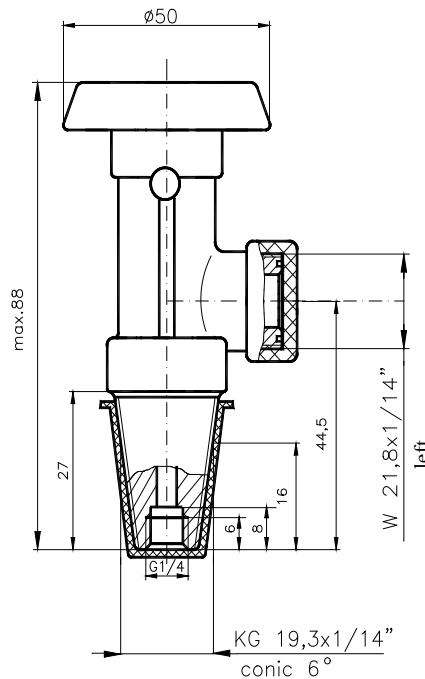
The product complies with the rules SR EN 13153:2003.

The valve type *RBG-1* assures :

- Perfect tightness after thousands cycles-open-close using ;
- Easy manipulating : short stroke ;
- Perfect resistance to liquefied petroleum gas ;
- Robust construction : two rivets ;
- Perfect quality and design ;

The exit thread is protected with protection cap.

The valve type *RBG-1*, can be equipped with excess flow check valve , to limit the liquefied gas flow, in consumption conditions and during the gas crossing from one cylinder to another ;



TECHNICAL DATA

Nominal pressure	30 bar
Test pressure	45 bar
Cylinder coupling (conical thread)	KG 19,3×1/14" conic 6° STAS 2666-81
Coupling with the pressure regulator	W21,8 × 1/14" left DIN 477-90
Operating temperature	(-30 ... +70)°C
Weight	~ 0,300 kg