



# COMPRESSED AIR PRESSURE REDUCER TYPE RP-1 ; RP-2



## DESCRIPTION

Types RP-1 and RP-2 pressure reducers are the reducing valves which are used in the installations for the compressed air, for pressure reducing , necessary to the pneumatic elements.

Pressure reducing is made by the air rolling passing through a nozzle clogged with a mobile element..

## TECHNICAL DATA

Type of Pressure Reducer	Input pressure [bar]	Output pressure [bar]	Maximum air flow [m <sup>3</sup> /h]	Working fluid temperature [°C]	Dimensions [mm]	Connection	Weight [kg]
RP-1	1 ... 8	0 ... 7	1	-30 ... +60	70×76×145	2×G1/4"	0,5
RP-2	10	0 ... 9	20		150×170×450	G1"+G3/4"	8
	12	6					
	30	15					

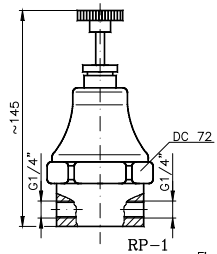


Fig.1

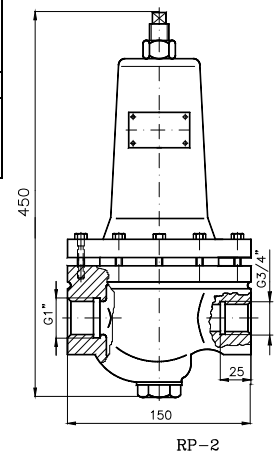


Fig.2

## ORDERING

You have to indicate :

- the name/type : RP-1 or RP-2 ;
- the product inlet and outlet pressure.

## MOUNTING

Pressure reducers are mounted with the main axle in vertically position , and are used for filtered compressed air.

Mounting at compressed air pipelines is made with connections G1/4" , G1" , G3/4" .

